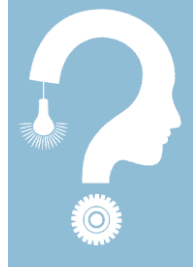


## PSY 310 – 2022 Spring

# Cognitive Processes



### Instructor Email

Olesya Blazhenkova  
olesya.blazhenkova@sabanciuniv.edu

### Class Schedule

Tuesday	10.40	12.30	FASS G018	
Friday	14.40	15.30	zoom	

### TAs

Belgin Deryalar [belgind@sabanciuniv.edu](mailto:belgind@sabanciuniv.edu)

Şahcan Özdemir [sahcan.ozdemir@sabanciuniv.edu](mailto:sahcan.ozdemir@sabanciuniv.edu)

### Office Hours

By appointment on Tuesday between 14:40 and 15:30.

## Course Description

Cognitive psychology is the study of the human mind and how it works: how we perceive, remember, and reason. In this course, you will learn how human thought processes are organized, how they affect our everyday behavior, and what are their underlying brain mechanisms. Topics include but are not limited to perception, attention, memory, learning, imagery, language, expertise, problem solving, and creativity. This course will present an overview of these topics, focusing on understanding major theories, research findings, and their practical applications.

At the end of this course, you should be able to:

- demonstrate the knowledge of the key concepts in cognitive psychology
- use cognitive psychology principles in understanding human behavior

## Course Structure

### Modules

Course is organized in 2 modules with a separate exam at the end of each module.

### Readings

The readings from a variety of sources including journal articles, will be uploaded on SuCourse website.

### In-Class Demonstrations & Experiments

Lectures will be supplemented by demonstrations of cognitive tests and experiments. Learning group activities on Miro board will be included in online classes.

### Teamwork

Students will be split in teams and will work on the project together.

## Workload and Evaluation

### 70 % Exams

There will be 2 exams in this course. Each exam will involve a mix of multiple choice and open-ended questions, covering materials from Lectures, assignments, and presented papers.

Exams 1 and 2 will make 35% and 35% of your grade. There will be no final exam. Note that all exams will be held physically, on campus.

Students who fail to show up for any of the exams indicated in the Syllabus without a valid excuse and not taking the make-up examinations for such exams will receive N/A as their final grade. Make-up policy is strict. If you have an official excuse (e.g., medical) for missing an exam, present the report within a week after the exam. The format of the make-up exams or assignments may or may not match the original exam. All make-ups are given at the end of the semester.

### 7 % Presentation

Each student is required to make one 5-min presentation on a topic related to the course materials. The papers for presentations will be posted.

### Interactive Learning Game

#### 8 % Game preparation and presentation (teamwork)

Best way of learning is trying to teach it to someone else. You will be required to form a team and prepare one ~10-min long interactive learning practice that will be held during the online class time.

### **8 % Game Report (individual submission)**

Your report will be considered only if you contributed to the teamwork (game development and presentation). Game Report should explain how your game contributes to understanding the specific cognitive process.

### **7 % Last week take-home thought paper**

This assignment will be given during the last week of classes.

### **Research Participation (up to 5 bonus points = 10 Sona research points):**

Students can optionally serve as participants in research that is run by Sabanci University researchers. By participating in research, you can get extra points. For this course, you will be able to earn up to 5 bonus points (1 research point equals ~ 30 minutes of research participation). 10 sona research points (10 RPs) will be converted to 5 bonus points added to your overall total at the end of the semester. More information on the available research projects will be provided during the semester. You will be able to sign up for the experiments and get your research participation points through the online Sona system at <http://sabanciuniv.sona-systems.com>. Please, carefully read the Guide for Students: Sabanci University Experiment Credits System (Sona).

## Grading Scale

### Conversion to letter grades

A	93-100
A-	86-92
B+	80-85
B	75-79
B-	70-74
C+	65-69
C	60-64
C-	55-59
D+	50-54
D	45-49
F	0-44

## Academic Integrity

It is the student's responsibility to be familiar with Sabanci University's policies on academic integrity, cheating and plagiarism. The assignments and exams you complete for this course should be the results of your own work and reflect your own understanding of the material. Scholastic dishonesty of any kind will not be tolerated.

## Course Schedule

Week and topic	In class	Online
<b>Week 1</b> Introduction	(1 March)	(4 March)
<b>Week 2</b> Attention	(8 March)	(11 March) Class cancelled
<b>Week 3</b> Attention & Perception	(15 March)	(18 March)
<b>Week 4</b> Perception	(22 March)	(25 March)
<b>Week 5</b> Perception & Imagery	(29 March)	(1 April)
<b>Week 6</b>	(5 April) <b>EXAM 1</b>	(8 April)
<b>Week 7</b> Imagery	(12 April)	(15 April)
<b>Week 8</b> Imagery & Memory	(19 April)	(22 April)
<b>Week 9</b> Memory	(26 April)	(29 April)
<b>Week 10</b> <b>SPRING BREAK</b>	(3 May)	(6 May)

<b>Week 11</b>	(10 May)	(13 May)
<b>Language</b>		
<b>Week 12</b>	(17 May)	<del>(20 May)</del>
<b>Learning</b>	Guest Lecture	No class— National Holiday
<b>Week 13</b>	(24 May)	(27 May)
<b>Problem Solving &amp; Creativity</b>		
<b>Week 14</b>	(31 May)	(3 June)
	<b>EXAM 2</b>	
<b>Week 15</b>	(7 June)	(10 June)
<b>From Face Perception to Social Cognition</b>		

Note: Course content, requirements and policies are subject to change at the discretion of the instructor. Changes will be posted on SU COURSE.